



# DEEP CLEAN GUIDE FOR WORKPLACES



# Deep Cleaning - Controlling The Risk



Whenever and wherever cleaning is taking place, it is extremely important that all potentially harmful dirt and bacteria are prevented from travelling around the building.

One of the ways in which such bacteria can be transmitted throughout a building is via the same cleaning equipment and solutions being used in areas of different use. Therefore, in order to minimise the risk of infection, cleaning operatives must adopt effective infection control procedures.

## COVID-19

The infection risk from coronavirus (COVID-19) following contamination of the environment decreases over time. It is not yet clear at what point there is no risk. However, studies of other viruses in the same family suggest that, in most circumstances, the risk is likely to be reduced significantly after 72 hours.





# Personal protective equipment (PPE)



Ensure your staff are protected from health & safety risks within the workplace.

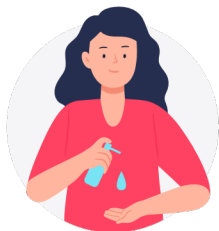
- Government guidance advises the minimum PPE to be worn for cleaning an area where a person with possible or confirmed coronavirus (COVID-19) is disposable gloves and an apron.
- Hands should be washed with soap and water for 20 seconds after all PPE has been removed.

- For high risk applications where there is visible contamination with body fluids, additional protection is required to cover the cleaner's eyes, mouth and nose.

Non-healthcare workers should be trained in the correct use of a surgical mask, to protect them against other people's potentially infectious respiratory droplets when within 2 metres and how to fit the mask correctly.



## How to wear a face mask correctly...



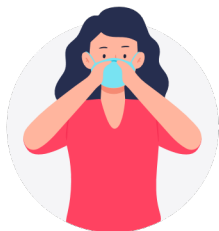
Wash your hands with soap and water or use hand sanitiser



Hold the mask with the inside facing you



Place the ear loops around each ear



Mold the stiff edge to the shape of your nose



Pull the bottom of the mask over your mouth and chin

**Guide to FACE MASK Tests & Requirements**

Choose the correct mask for the task!

**Medical Face Mask - Standards/Directives/Legislative requirements**

- All products must be **CE marked** which shows the product meets EU safety, health and environmental requirements
- Product and packaging must conform to **Medical Devices Regulation 2017/745**
- EN 14683:2019** Requirement and test methods on medical face masks
- Product and packaging must be latex free where possible
- The government guidance for healthcare professionals is Type III face masks

	Low	Medium	High
Fluid/Splash resistance	< 10mmHg	< 10mmHg	> 10mmHg
BFE % Bacterial Filtration Efficiency	> 95%	> 95%	> 95%
Differential Pressure	< 40 Pa/cm <sup>2</sup>	< 40 Pa/cm <sup>2</sup>	< 40 Pa/cm <sup>2</sup>
Flammability	Class I	Class II	Class II
EN 14683 Rating	Type I	Type II	Type III

Mask should be single use. Masks with ties or ear loops must not detach from the face mask when in use.

**Performance registration**

Fluid/Splash resistance	Mask resistance to penetration by synthetic blood under pressure (mmHg). Higher resistance = higher protection.
BFE % Bacterial Filtration Efficiency	Prevention of particles (bacterial) of average size of 1.0 - 5.0 microns (µ)
Differential Pressure	Pressure drop across mask, or resistance to air flow in Pa/cm <sup>2</sup>
Flammability	Oxygen resistance = better protection but less breathability. Measures the flammability of the mask material.

www.jangro.net

# Hand Hygiene



Good hand hygiene is the primary, most important method of preventing cross contamination and the spread of germs and bacteria.

Handwashing is particularly important when carrying out cleaning in areas such as care homes, schools and hospitals and you should never underestimate the importance of hygiene in the workplace.

It is normal practice throughout the cleaning and catering industries to provide protective gloves to staff when carrying out most tasks. What should not be overlooked is the fact that hands should be thoroughly cleaned before and after gloves are worn.



## Why is hand hygiene so important?



Effective hand washing removes or destroys harmful bacteria picked up by the hands and also reduces the amount of bacteria that is normally present on the skin. The aim of good hand washing practices is to ensure your own protection and prevent the transfer of any harmful bacteria to other people. The important thing to remember is that good technique is more important than the type of hand cleanser used.

### Remember **ALWAYS** wash your hands whenever:

- you have had contact with any bodily fluids
- you have used or cleaned the toilet
- you have sneezed, blown or wiped your nose
- you have covered your mouth with your hand while coughing or sneezing
- before eating, handling and preparing foods
- your hands feel or look dirty
- you have handled or cleaned up after any animals

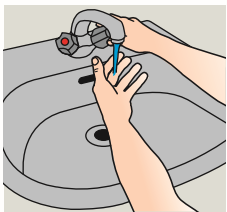


# Hand Washing

The correct hand-washing technique.

When washing hands, the following points should be included and adopted by all staff:

Wash for 20 seconds



**1** Remove any jewellery from hands and wrists to allow effective cleaning. Wet hands with clean water.



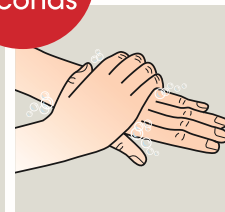
**2** Apply enough cleanser to ensure it produces a good thick lather.



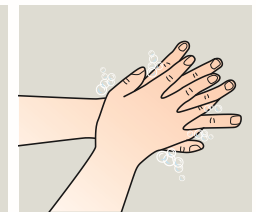
**3** Rub hands to produce lather.



**4** Palm to palm.



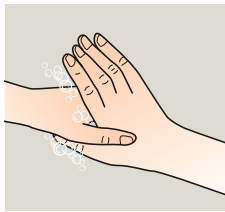
**5** Right palm over the back of the left hand and vice versa.



**6** Intertwine the fingers of the right hand over the left and vice versa. Pay particular attention to the areas between fingers and finger nails.



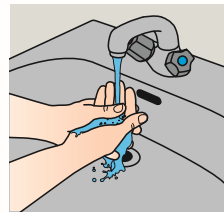
**7** Rotationally rub backwards and forwards with clasped fingers of the right hand in the left palm. Change hands and repeat.



**8** Rotationally rub the right thumb clasped in the left palm, change hands and repeat.



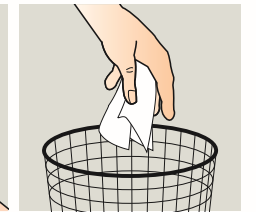
**9** Grip the left wrist and work cleanser into the skin. Do the same with the right wrist.



**10** Rinse off all traces of lather with clean water.



**11** Dry hands thoroughly with a disposable paper towel.



**12** Discard paper towel in waste bin, avoid touching the bin.

## What hand cleanser should I use?

Try to avoid using tablet soap. If you must use it, make sure that the soap is cleaned and dried and changed regularly. Also, soap dishes that retain fluid should not be used under any circumstances.

Liquid or foam hand soap from a dispenser is the best form of cleaner and Jangro provide a vast range from which customers can select the product that best suits their needs. Your local Jangro representative will provide further advice on selecting the correct product to use.

## What other steps should be considered to maintain good hygiene?

The regular application of hand moisturising cream will help prevent hands becoming chapped. Staff should be instructed to wear all personal protective equipment provided to protect their hands.

Finally, any cuts or abrasions to the hands should be covered with a clean water-proof dressing, which should be replaced regularly until fully healed.

# Hand Sanitising



Highly effective skin disinfectant, which contains 70% alcohol and moisturiser. Evaporates from hands without leaving residue or odour.



XA601



BK140

## Jangro Alcohol Gel Hand Rub

Alcohol based skin disinfectant. Use after routine hand washing and when soap or water is not readily available. Will evaporate from hands and kill bacteria almost immediately without leaving a residue or odour.

BK140-5 5 litre  
BK140-50 500ml

## Hand Sanitising Dispenser Back Board

Dispenser sold separately.

XA601 250x350mm

Scientifically proven to kill 99.9% of germs without water

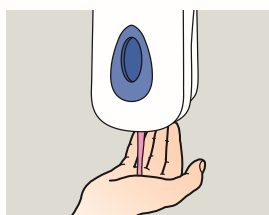
## Jangro Automatic Sanitiser Dispenser & Stand

- Comes with 1ltr bulk fill automatic dispenser
- Suitable for alcohol and gel sanitiser
- Light and durable aluminium unit
- Size - 50x40x155cm

BK751



When sanitising hands, the following points should be included and adopted by all staff:



1 Apply 2 - 3 pumps into clean, dry, cupped hands.



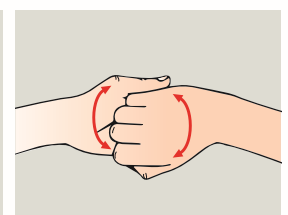
2 Rub hands palm to palm.



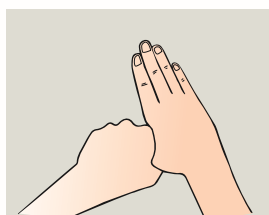
3 Rub back of each hand with palm of other hand with fingers interlaced.



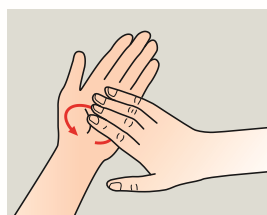
4 Rub palm to palm with fingers interlaced.



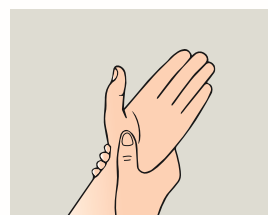
5 Rub with back of fingers to opposing palms with fingers interlocked.



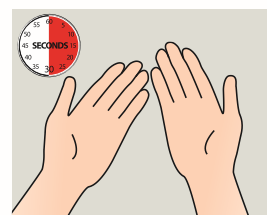
6 Rub each thumb clasped in opposite hand using rotational movement.



7 Rub fingers in opposite palm in a circular motion.



8 Rub each wrist with opposite hand.



9 Rub until hands are dry. Steps 1 - 8 should take at least 30 seconds.



BK140



# COVID-19: Cleaning in non-healthcare settings



## What you need to know...

- cleaning an area with normal household disinfectant after someone with suspected coronavirus (COVID-19) has left will reduce the risk of passing the infection on to other people
- wear disposable or washing-up gloves and aprons for cleaning. These should be double-bagged, then stored securely for 72 hours then thrown away in the regular rubbish after cleaning is finished
- using a disposable cloth, first clean hard surfaces with warm soapy water. Then disinfect these surfaces with the cleaning products you normally use. Pay particular attention to frequently touched areas and surfaces, such as bathrooms, grab-rails in corridors, stairwells and door handles
- if an area has been heavily contaminated, such as with visible bodily fluids, from a person with coronavirus (COVID-19), use protection for the eyes, mouth and nose, as well as wearing gloves and an apron
- wash hands regularly with soap and water for 20 seconds, and after removing gloves, aprons and other protection used while cleaning

Don't forget frequently touched areas!



## How to clean potential virus outbreak

### STAGE 1 - Clean

USING A CLEANING DETERGENT

- 1 Use appropriate PPE as undicated in the Safety Data Sheet.
- 2 Place Safety Signs.
- 3 Dilute 60ml to 600ml water in a trigger spray bottle.
- 4 Spray onto surface.
- 5 Leave for 30 seconds.
- 6 Wipe clean surface.

### STAGE 2 - Sanitise

USING A CLEANER DISINFECTANT

- 1 Wash hands with antibacterial soap and water then sanitise with alcohol gel.
- 2 Put on disposable PPE and place safety signs. Some infections can become airborne - Please wear a mask!
- 3 Spray surface and leave for 5 minutes, then wipe clean.
- 4 Place all waste in waste bag. Seal bag and place in appropriate area for disposal.
- 5 Wash hands with antibac soap & then dry with disposable towel.
- 6 When dry, alcohol sanitiser can be applied.

Stage 1 can be carried out using a cleaning detergent, followed by a disinfectant for stage 2. Example above uses Virucidal Cleaner, which can be used for both stages.

# COVID-19: Cleaning in non-healthcare settings



## Colour Coding

The aim of colour coding is to prevent cross contamination during the cleaning process. It is vital that an effective colour-coded system is implemented. There is no legislative requirement to operate a colour-coded cleaning regime. However, it is generally considered good practice to adopt such a scheme when cleaning commercial premises.

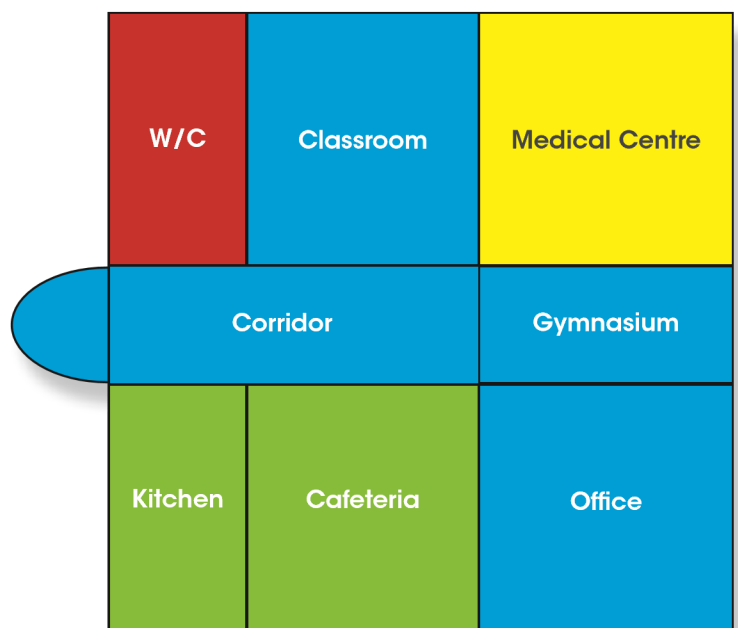
The cleaning industry has developed a widely used colour-coding system for all relevant cleaning equipment which should be used in the areas identified by the various colours used.



Although some companies will adopt systems that incorporate other colours, it is extremely important that once the colour has been designated to particular area, that it is strictly adhered to at all times.

## Recommended Usage

- GENERAL LOW RISK AREAS
- GENERAL FOOD AND BAR USE
- GENERAL WASHROOM
- CLINICAL



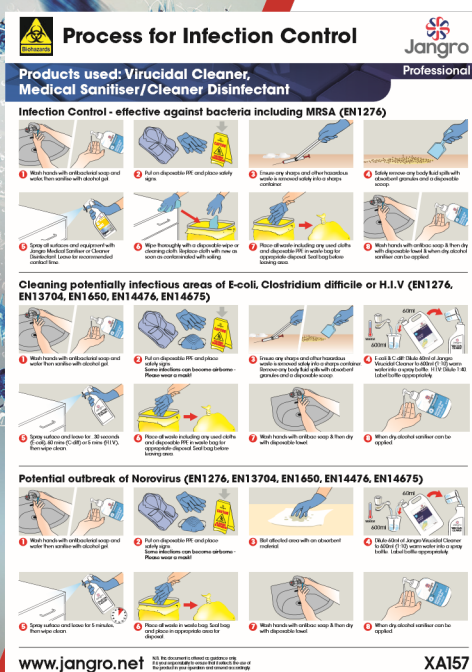


# COVID-19: Effective Cleaning Products



All germs, bacteria and viruses are, in most cases, invisible to the naked eye. Although we cannot see them, we all know they are there. We also know that if they are not removed or destroyed effectively, they will multiply or mutate, increasing the likelihood of an outbreak of infection. Therefore, it is important that the products that are utilised as part of the overall cleaning regime are effective.

## Virucidal Cleaner



TESTED AGAINST ENVELOPED VIRUSES



Public areas where a symptomatic individual has passed through and spent minimal time, such as corridors, but which are not visibly contaminated with body fluids can be cleaned thoroughly as normal.

All surfaces that the symptomatic person has come into contact with must be cleaned and disinfected, including:

- objects which are visibly contaminated with body fluids
- all potentially contaminated high-contact areas such as bathrooms, door handles, telephones, grab-rails in corridors and stairwells

### Virucidal Cleaner Unperfumed

Powerful multi-purpose bactericidal cleaner and sanitiser. Kills Norovirus, E-coli, Salmonella typhimurium, Listeria monocytogenes H1N1 Influenza virus, HIV, Hepatitis C, MRSA & C. difficile. Passes EN 1276, 13704, 1650, 14476 & 14675. Bleach free, non tainting and unperfumed. Suitable for use in healthcare, catering, schools and high risk applications.

BA053-75 750ml ready to use  
BA053-5 5 litre (Dilute 1:10)

### Jangro Infection Control Wallchart

A wall chart providing illustrated guidance on how to clean infectious areas including E-coli, C.difficile, HIV and Norovirus.

XA157 A3

# COVID-19: Effective Cleaning Products



## Cleaning and Disinfection

Use disposable cloths or paper roll and disposable mop heads, to clean all hard surfaces, floors, chairs, door handles and sanitary fittings, following one of the options below:

- A virucidal cleaner which passes EN14476 and has been tested against enveloped viruses.
- Bleach based disinfectant at a dilution of 1,000 parts per million (PPM) available chlorine.
- An alcohol based disinfectant cleaner.

Follow manufacturer's instructions for dilution, application and contact times for all detergents and disinfectants



### Virucidal Cleaner Unperfumed

Powerful multi-purpose bactericidal cleaner and sanitiser. Kills Norovirus, E-coli, Salmonella typhimurium, Listeria monocytogenes H1N1 Influenza virus, HIV, Hepatitis C, MRSA & C. difficile. Passes EN 1276, 13704, 1650, 14476 & 14675. Bleach free, non tainting and unperfumed. Suitable for use in healthcare, catering, schools and high risk applications.

BA053-75 750ml ready to use  
BA053-5 5 litre (Dilute 1:10)



### Jangro Cleaner Disinfectant

Disinfects, cleans and deodorises in one application. Will help prevent the spread of infection. Suitable on all washable surfaces. Ideal in schools, nursing homes, surgeries and wherever there is risk of infection. Kills MRSA and Shigella (the most common cause of dysentery). Passes EN 1276.

BA050-75 750ml  
BA050-5 5 litre Dilute 1:25



1 tablet +  
1litre water =  
1000ppm

### Jangro Chlorine Tablets

Tablets give a measured dose of available chlorine, which can be used for the disinfection of equipment, work surfaces, hospital, medical, hotel, catering etc. Effective against fungi, spores and viruses (including HIV and Norovirus). Passes EN13704, EN14476, EN1040, EN13697, EN1276 and EN1650.

BC013 200 tablets



### Enviro Cleaner Disinfectant Sachets

A QAC based cleaner disinfectant which contains deodoriser and perfume designed for cleaning and sanitising in hospitals, nursing homes and hotels where sanitation and the deodorising smells is important.

BB550 1x100 sachets Dilute 1:25

### Enviro H6 General All Purpose Sanitiser

Concentrated, unperfumed multi-purpose disinfectant cleaner. Passes EN 1276.

BB456-1 1 litre



# Sanitising for Catering



## Cleaning and Disinfection



**QAC  
FREE**

### Jangro Premium Alcohol-Based Sanitiser

Ready-to-use, alcohol-based, disinfectant cleaner for use in the food processing, catering and healthcare industries. Suitable for use on hard washable surfaces, such as stainless steel, polished metal, painted surfaces, glass, most plastics and ceramics. Passes EN1276, EN13697 and EN1650.

BB008-75 750ml  
BB008-5 5 litre



### Kitchen Cleaner Sanitiser

Multi-purpose cleaner sanitiser and terminal disinfectant. Removes general soiling and kills a range of bacteria including MRSA. Unperfumed formulation makes it ideal for use in kitchens. Passes EN1276 in 30 seconds.

BB010-75 750ml  
BB010-5 5 litre



### Enviro K4 Kitchen Sanitiser

Concentrated unperfumed solution for multi-purpose cleaning and disinfecting.

BB470-1 1 litre



### Surface Sanitising Wipes

An impregnated wipe with bactericidal solution for use in all food handling areas. Kills the bacteria that causes MRSA, E-coli and most other bacteria.

BB195 40 sheets  
BB190 200 sheets



### Virucidal Cleaner Unperfumed

Powerful multi-purpose bactericidal cleaner and sanitiser. Kills Norovirus, E-coli, Salmonella typhimurium, Listeria monocytogenes H1N1 Influenza virus, HIV, Hepatitis C, MRSA & C. difficile. Passes EN 1276, 13704, 1650, 14476 & 14675. Bleach free, non tainting and unperfumed. Suitable for use in healthcare, catering, schools and high risk applications.

BA053-75 750ml ready to use  
BA053-5 5 litre (Dilute 1:10)



# Disposable Wiping



## Disposable Paper Wipes

Wiping is part of the everyday cleaning of all facilities. Jangro provides a range of disposable paper and non-woven wipes, colour-coded to prevent cross contamination.



### Jangro Centrefeed Dispensers

Key lockable units available in plastic or stainless steel.

AH126 Stainless Steel  
AH137 Plastic



### Jangro Centrefeed Rolls

Blue or white rolls available in 1, 2 or 3 ply tissue. 6 rolls per case.



### Hand Towel Dispensers

Key lockable units available in plastic or stainless steel.

AH110 Stainless Steel  
AH106 Plastic



### Paper Hand Towels

Hand towels are available in variants of c-fold, s-fold or z-fold. Colours in white, blue or green,



### Premium Biowipe Plus

Heavy duty anti-bacterial cleaning cloth which has exceptional strength both wet and dry and has large holes which gives more wiping edges to remove stubborn marks which increases its wiping performance.

CG017 25 per pack



### All Purpose Cloth

Non woven cloth with open cellular structure makes them very effective at collecting dirt particles, as well as removing stubborn stains.

CG005 50 per pack

# Colour-Coded Equipment



## Floor Care

Avoid creating splashes and spray when cleaning. Any cloths and mop heads used must be disposed of and should be put into waste bags as outlined below. When items cannot be cleaned using detergents or laundered, for example, upholstered furniture and mattresses, steam cleaning should be used. Any items that are heavily contaminated with body fluids and cannot be cleaned by washing should be disposed of.



### Duo-Hygiene Bucket

Colour coded dual bucket with central wringer, separates clean and soiled mopping solutions for more hygienic cleaning. 14 litre (8 + 16L) capacity.

HB060 ● ● ● ●



### Jangro Long Tall Sally Bucket & Wringer

26 litre capacity bucket and wringer combo with 3" castors (16 litre capacity working water). Features extra long handle allowing maximum pressure when wringing out mops.

HB025 Bucket and Wringer  
HA003 Kentucky Mop Head  
HA006 Kentucky Handle

● ● ● ●



### Vileda Supermop Ag

Heavy duty non-woven material now contains silver (Ag) to inhibit bacterial growth on the mop by 99.99% and zig zag edges provide high absorption and 30% better dirt pick up. 10L Capacity.

HB300 Mop Head  
HB301 Aluminium Handle  
HB302 Bucket and Wringer

● ● ● ●



### Vileda Ultraspeed Mini Kit

Innovative wringer, flat mop frame and microfibre mop pad. Kit includes 10L bucket, wringer, microlite mop pad and frame. Telescopic handle and SafeMop sold separately.

HB220 10 litre kit  
HB224 Telescopic handle  
HB222 SafeMop

● ● ● ●



### Exel Mop Handle 54"

Aluminium mop handles with colour coded grips. Fits Exel mop heads.

HA025 ● ● ● ●



### Exel Big White Mop

The big white mop head is a fantastic alternative to traditional mops, they are very light in use, highly absorbent and extremely cost effective. Fits handle HA025.

HA024 ● ● ● ●



### Exel PY Mopping

Mop heads available in three sizes and colour-coded.

HA014 200 gm  
HA015 250 gm  
HA016 300 gm

● ● ● ●

## Colour Coding Guide

- GENERAL LOW RISK AREAS
- GENERAL FOOD AND BAR USE
- GENERAL WASHROOM
- CLINICAL





# Colour-Coded Equipment



## Premier Hygiene Brushware

Designed to be robust enough to withstand extremely heavy use. All brushes may be autoclaved. A wide choice of colours available for the prevention of cross-contamination.



### Premier Flat Sweeping Broom

All items are colour-coded.

- HP021 Soft 28cm
- HP022 Medium 28cm
- HP023 Stiff 28cm
- HP061 Medium 50cm
- HP064 Stiff 50cm



### Lightweight Aluminium Handle

- HN090 127cm



### Wire Hand Brush

- HN042 Stainless steel wire scratch 27.9cm



### Short Handled Churn Brush

- HN077 Medium 25.4cm



### Deck Scrub

- HP067 Stiff 28cm



### Hand Brush

- HN083 Medium/Stiff 31.7cm



### Hand Scrubbing Brush

- HN075 Stiff 15.4cm



### Closed Dust Pan

- HN069 Medium 18cm



## Colour Coding Guide

- GENERAL LOW RISK AREAS
- GENERAL FOOD AND BAR USE
- GENERAL WASHROOM
- CLINICAL



# Laundry Products



## Laundry

Wash items in accordance with the manufacturer's instructions. Use the warmest water setting and dry items completely. Dirty laundry that has been in contact with an unwell person can be washed with other people's items.

Do not shake dirty laundry, this minimises the possibility of dispersing virus through the air.

Clean and disinfect anything used for transporting laundry with your usual products, in line with the cleaning guidance above.

### Premium Laundry Care Chart

Provides guidance on good laundering procedures.

XA158 A3

**Good Laundering Procedures** Jangro PREMIUM

**WASH PROGRAMMES**

- Standard Wash - 40°C
- Red Bag - 71°C  
Linen (sluice wash)
- Red Bag - 40°C  
Personal Clothes (Fabrix)
- Towels - 40°C
- Kylie Wash - 60°C
- Stained Wash - 40°C  
(Low Temperature Laundry Detergent)

**PROCEDURES**

- PRE-SORTING**  
On arrival in the laundry, items should be pre-sorted into the bins provided.
  - Cottons
  - Polycottons/colours
  - Delicates, woollens etc.
 Write work should be separated from colour  
 Heavily soiled items should be separated from lightly soiled items. These will require different wash procedures, i.e. sluice work.
- LOADING LEVELS**
  - Do not under load the machine. An under loaded machine costs as much to run as a fully loaded machine. Wait for a full load.
  - Do not overload the machine. An overloaded machine will produce poor results and items will require re-washing. Load the machine to its correct capacity.
  - A fully loaded machine should still be a loose one, with plenty of extra space. Do not fill up that empty space. NOTE: for polycotton items, load machine to two thirds capacity.
- PROGRAMME SELECTION**  
Select the correct programme for the type of wash required - consult the process wall chart. Failure to choose the appropriate programme will mean that items are incorrectly washed or may suffer damage.
- COOLDOWN**  
Cool down of polycotton items helps prevent thermal shock and permanent creasing.
- CLEANDOWN**  
At the end of each working day the following tasks should be carried out:
  - Switch off all equipment
  - Wipe inside and outside of the washing machine
  - Leave the washing machine door open
  - Check levels in product containers and replace if necessary
 Follow steps a - c for dryers.
- CHANGING PRODUCTS**
  - Remove lance from empty container
  - Insert lance into new container, ensuring the product is the same type
  - When decanting product residue, use a clean funnel
  - Replace the cap once the product has been changed

Ensure safety data sheets and risk assessments are up to date for any chemical used

DO NOT MIX CHEMICALS  
ALWAYS WEAR RUBBER GLOVES AND SAFETY GLASSES WHEN CHANGING PRODUCT CONTAINERS

## Bug Kill for high risk application

Scientifically proven to destroy:

- C. difficile
- MRSA
- H1N1 virus

### Premium Fabrix Laundry Liquid

A liquid laundry detergent which is scientifically proven to destroy viruses such as H1N1 swine flu virus, C. difficile spores and MRSA at temperatures as low as 30°C.

- BP220-5 5 litre
- BP220-10 10 litre



Destroys viruses at 30°C

# Laundry Products



Outstanding results first time...



## PREMIUM RANGE

- ✓ Performance
- ✓ Energy savings
- ✓ Kills bacteria



### Laundry Bags

Plastic bags designed so that soiled or contaminated clothing does not have to be handled in the laundry. They feature a red strip along their length which dissolves in water releasing the contents safely when the wash starts.

CM400 Pack of 200 18"x28"x38"  
CM401 Pack of 200 18"x28"x28"



### Premium Bio Laundry Liquid

A biological laundry liquid for whites and colours with built in deodoriser. Specially formulated to give outstanding results.

BP210-5 5 litre  
BP210-10 10 litre



### Premium Non Bio Laundry Liquid

A non-biological laundry liquid for whites and colours with built in deodoriser. A delicate formulation makes this an ideal choice for sensitive skin.

BP215-5 5 litre  
BP215-10 10 litre



### Premium Fabric Softener

A concentrated conditioner that softens and reduces static, with the benefit of quick dry and easy iron features. High quality fragrance imparts freshness for several days.

BP230-5 5 litre  
BP230-10 10 litre



### Premium Low Temperature Laundry Destainer

A powerful destainer that starts working from only 20°C, which saves energy and time. Tough on stains but gentle on fabrics. Suitable for whites and colours.

BP240-5 5 litre  
BP240-10 10 litre



### Premium Peroxide Laundry Destainer

An effective destainer, particularly when washing at 60°C and above. Removes Stubborn bleachable stains including tea, coffee and wine. Suitable for whites and colours.

BP245-5 5 litre  
BP245-10 10 litre



# Waste Disposal

## Efficient Waste Disposal

The key to preventing the spread of infection effectively is prompt and efficient removal of waste. All companies charged with handling waste, must develop rigorous systems that ensure that waste is disposed of promptly, effectively and correctly.

Effective waste disposal procedures will go a long way to reducing the risks associated with the spread of bacteria and infection.

Waste from possible cases and cleaning of areas where possible cases have been (including disposable cloths and tissues):

1. Should be put in a plastic rubbish bag and tied when full.
2. The plastic bag should then be placed in a second bin bag and tied.
3. It should be put in a suitable and secure place and marked for storage until the individual's test results are known.

Waste should be stored safely and kept away from children. You should not put your waste in communal waste areas until negative test results are known or the waste has been stored for at least 72 hours.

- if the individual tests negative, this can be put in with the normal waste
- if the individual tests positive, then store it for at least 72 hours and put in with the normal waste

If storage for at least 72 hours is not appropriate, arrange for collection as a Category B infectious waste either by your local waste collection authority if they currently collect your waste or otherwise by a specialist clinical waste contractor. They will supply you with orange clinical waste bags for you to place your bags into so the waste can be sent for appropriate treatment.



### Yellow Clinical Sacks

Used for incineration. Bags are supplied on a roll or flat packed. Various sizes and quantities available.



### Orange Clinical Sacks

Alternative treatment/specialised waste. All bags supplied on the roll. Various sizes and quantities available.



### Yellow Tiger Striped Clinical Sacks

Non-clinical offensive waste. All bags supplied on the roll. Various sizes and quantities available.



### Sackholder Frame

Colour Coded open frame sackholders in blue, green, red, yellow & white, with a high quality white polyester finish frame.

CB060 



### Removable Sack Holder

Hands free sack retention frame with soft closing lid. Fire retardant to comply with the Department of Health's 'Healthcare Fire Safety (HTM-05-03)' policy. Available in 23ltr, 42ltr or 75ltr.

CB066 

# Back to Work... With a difference



## Ensure workstations are kept hygienically clean

Before workers, customers, or visitors return, premises should undergo a deep clean to eliminate any trace of bacteria. Whilst the risk of COVID-19 surviving on surfaces is likely to be reduced significantly after 72 hours, other harmful bacteria may still be present (MRSA, for example, can live on surfaces for weeks!). If they are not removed or destroyed effectively, they will multiply or mutate, increasing the likelihood of an outbreak of infection.

Operatives should be encouraged to keep their individual workspace hygienically clean with regular cleans carried out throughout the day. The use of disposable cloths or paper roll to clean work surface together with gloves and a ready to use solution of disinfectant. Training should be provided to ensure each individual is aware how to use cleaning products correctly. Jangro provide training courses through [www.jangrolms.net](http://www.jangrolms.net) which cover introduction to cleaning and COSHH Awareness.

As well as the usual tasks on the cleaning check list (such as washrooms, flooring etc.), operatives should pay special attention to high traffic touch points within a facility. Lift buttons, telephones, and door handles are all places that can transfer harmful bacteria to hands, and, in turn, be moved onto new surfaces or transmitted to other people.



Here are some ideas to help you make the work environments safer for employees:

- Encourage regular hand washing
- Place hand sanitiser on individuals desks
- Provide a solution of ready to use disinfectant, cleaning cloth and gloves

Another tip to avoid busy canteen areas, is to provide refreshment facilities for each workstation to reduce members of staff spreading germs to each other.



Online training for staff -  
[www.jangrolms.net](http://www.jangrolms.net)

# Display Posters



## Wall Charts

**Process for Infection Control**  
Professional

Products used: Virucidal Cleaner, Medical Sanitiser/Cleaner Disinfectant

**Infection Control - effective against bacteria including MRSA (EN1276)**

- 1 Wash hands with antiseptic soap and water for 20 seconds.
- 2 Use disposable PE and place in a bag.
- 3 Do not touch any other surfaces with a soiled apron or gloves.
- 4 Rinse thoroughly with clean water and dry with a disposable paper towel.
- 5 Use a separate PE and place in a bag.
- 6 Do not touch any other surfaces with a soiled apron or gloves.

**Cleaning potentially infectious areas of E-coli, Clostridium difficile (EN13704, EN1650, EN14476, EN14675)**

- 1 Wash hands with antiseptic soap and water for 20 seconds.
- 2 Use disposable PE and place in a bag.
- 3 Do not touch any other surfaces with a soiled apron or gloves.
- 4 Rinse thoroughly with clean water and dry with a disposable paper towel.
- 5 Use a separate PE and place in a bag.
- 6 Do not touch any other surfaces with a soiled apron or gloves.

**Potential outbreak of Norovirus (EN1276, EN13704, EN1650, EN14476)**

- 1 Wash hands with antiseptic soap and water for 20 seconds.
- 2 Use disposable PE and place in a bag.
- 3 Do not touch any other surfaces with a soiled apron or gloves.
- 4 Rinse thoroughly with clean water and dry with a disposable paper towel.
- 5 Use a separate PE and place in a bag.
- 6 Do not touch any other surfaces with a soiled apron or gloves.

www.jangro.net

### Process For Infection Control

For use with Virucidal Cleaner.

XA157 A3

**Process for Infection Control**  
Professional

Products used: Chlorine Tablets, Medical Sanitiser/Cleaner Disinfectant

**Infection Control - effective against bacteria including MRSA (EN1276)**

- 1 Wash hands with antiseptic soap and water for 20 seconds.
- 2 Use disposable PE and place in a bag.
- 3 Do not touch any other surfaces with a soiled apron or gloves.
- 4 Rinse thoroughly with clean water and dry with a disposable paper towel.
- 5 Use a separate PE and place in a bag.
- 6 Do not touch any other surfaces with a soiled apron or gloves.

**Cleaning potentially infectious areas of E-coli, Clostridium difficile or H1V**

- 1 Wash hands with antiseptic soap and water for 20 seconds.
- 2 Use disposable PE and place in a bag.
- 3 Do not touch any other surfaces with a soiled apron or gloves.
- 4 Rinse thoroughly with clean water and dry with a disposable paper towel.
- 5 Use a separate PE and place in a bag.
- 6 Do not touch any other surfaces with a soiled apron or gloves.

**Potential outbreak of Norovirus**

- 1 Wash hands with antiseptic soap and water for 20 seconds.
- 2 Use disposable PE and place in a bag.
- 3 Do not touch any other surfaces with a soiled apron or gloves.
- 4 Rinse thoroughly with clean water and dry with a disposable paper towel.
- 5 Use a separate PE and place in a bag.
- 6 Do not touch any other surfaces with a soiled apron or gloves.

www.jangro.net

### Process For Infection Control

For use with Chlorine Tablets

XA169 A3

**Sanitise your hands**  
Professional

**Stop Cross Contamination**

- 1 Apply 2-3 drops into clean, dry cupped hands.
- 2 Rub hands palm to palm.
- 3 Rub back of each hand with palm of other hand with fingers interlaced.
- 4 Rub palm to palm with fingers interlaced.
- 5 Rub with back of fingers to opposing palm with fingers interlaced.
- 6 Rub each thumb clasped in opposite hand cup.
- 7 Rub fingers in opposite palm to a circular motion.
- 8 Rub each wrist with opposite hand.
- 9 Rub until hands are dry (20 seconds).

Ensure any cuts and abrasions are covered with a clean waterproof plaster.

www.jangro.net

### Sanitise Your Hands Guide

XA185 A4

**The correct hand-washing technique**  
Professional

**Task Card**

- 1 Remove any jewellery to allow effective cleaning with clean water.
- 2 Apply enough water to cover all surfaces of both hands.
- 3 Rub hands to position palm.
- 4 Palm to palm.
- 5 Digital palm over the back of the left hand and vice versa.
- 6 Rub between the fingers of the right hand over the left and vice versa. Pay particular attention to the area between fingers and under nails.
- 7 Gradually rub backwards and forwards with clasped fingers of right hand over the palm of the left hand and repeat.
- 8 Rub the left wrist and forearm with the right hand.
- 9 Rub the right wrist and forearm with the left hand.
- 10 Dry hands thoroughly with a disposable paper towel.
- 11 Discard paper towel in waste bin, avoid touching the bin.

Ensure any cuts and abrasions are covered with a clean waterproof plaster.

www.jangro.net

### Hand Washing Guide

XA159 A4

**Colour Coding**  
Professional

The aim of an equipment Colour Coding system is to prevent cross contamination during the cleaning process. It is vital that a system forms part of employee training programmes.

The Colour Coding of cleaning equipment is a simple but important step that will make a large contribution to hygiene standards and the elimination of cross infection.

- BLUE** General low risk areas
- GREEN** General food and bar use
- RED** General Washroom
- Yellow** Clinical
- RED/WHITE** Best practice for sanitary appliances

Jangro Helpline 0845 488 5223 Jangro House, Wobsey Road, Farnworth, Bolton, BL4 9AU Tel: 01204 790955 Fax: 01204 515861 www.jangro.net

### Colour Coding

XA156 A4

**Safety First**  
Professional

ARE YOU PROTECTED WHEN USING CHEMICALS?

EMERGENCY ACTION

- EYE CONTACT**: Rinse cautiously with water for several minutes. Remove contact lenses if present and easy to do. Continue rinsing. Get immediate medical advice/attention.
- SKIN CONTACT**: Wash skin with plenty of water. Remove/Soak off immediately all contaminated clothing. If skin irritation occurs, get medical advice/attention.
- INHALATION**: Remove victim to fresh air and keep at rest in a position comfortable for breathing. Call a poison centre or doctor/physician if you feel unwell.
- INGESTION**: If swallowed: Rinse mouth. Do NOT induce vomiting. Call a poison centre or doctor/physician if you feel unwell.

WHAT DO THE CLP/GHS HAZARD SYMBOLS MEAN?

STAY SAFE...ALWAYS USE CHEMICALS RESPONSIBLY

www.jangro.net

### Safety First

XA186 A3

**KEEP SAFE DISTANCE**

**INFECTION CONTROL SUPPORT**

Social Distancing Floor Mats

Self-Adhesive Floor Slickers

2m

Ask for a copy of our Infection Control Support for social distancing signs and matting.



# Training Guide Support



## Area Cleaning Charts

**Floor Care**

**FOR: VINYL, THERMOPLASTIC, RUBBER, LINOLEUM, COMPOSITION, ASPHALT, TERRAZZO, SEALED WOOD & SEALED CORK FLOOR SURFACES.**

**SAFETY FIRST**

ALWAYS read, understand and adhere to label instructions and dilution rates. NEVER MIX CHEMICALS. Take care when handling and using products.

ALWAYS use protective safety wear and sensible footwear.

ALWAYS check respiratory for loose parts, make plug before using.

ALWAYS replace cap on container and never leave any chemicals unattended especially where children can reach them.

When a product is to be diluted for use, application, ensure the spray bottle is correctly labelled.

**FLOOR STRIPPING FROM ROOMS:**

- 1. Strip and
- 2. MOP FLOOR
- 3. STRIP AND MOP AGAIN
- 4. STRIP AND MOP AGAIN
- 5. WAX (if available)
- 6. POLISH
- 7. CLEAN
- 8. STRIP AND MOP AGAIN

**FLOOR APPLICATION FROM ROOMS:**

- 1. Strip and
- 2. MOP FLOOR
- 3. STRIP AND MOP AGAIN
- 4. STRIP AND MOP AGAIN
- 5. WAX (if available)
- 6. POLISH
- 7. CLEAN
- 8. STRIP AND MOP AGAIN

**MAINTENANCE ITEMS REQUIRED:**

- SAFETY WEAR AND BOOTS
- SWEEPER MOP OR BRUSH
- HOSE REED MACHINE
- CLEANING/STRIPPING PAD
- BUCKET AND CLEAN MOP
- SPRAY BOTTLE
- MEASURE

**WHEN FINISHED:** Wash and store all equipment used. Wipe down machinery and cables. De-lam all items to laboratory. Always empty caps on chemical containers etc. secure. Ensure steamroller is locked upon leaving.

**Toilet & Washroom**

**Put on safety wear. Rubber gloves should be worn. Check, clean & refill soap, toilet tissue, paper and roller dispensers. Sweep floor and empty waste bins.**

**SAFETY FIRST**

ALWAYS read, understand and adhere to label instructions and dilution rates before using any chemical.

NEVER MIX CHEMICALS.

ALWAYS use protective safety wear and sensible footwear. Take care when handling and using chemicals.

ALWAYS replace cap on containers and never leave any chemicals unattended especially where children can reach them.

When a product is to be diluted for spray application, ensure the spray bottle is correctly labelled.

**DAILY CLEANING**

**Product choice: Jangro**

- Foaming Bactericidal Cleaner**
- Germicidal Washroom Cleaner**
- Perfumed Toilet Cleaner**
- Glass & Mirror Cleaner**

**WEEKLY CLEANING**

**Product choice: Jangro**

- Toilet Descaler**
- Acidic Toilet Cleaner**
- Foaming Bactericidal Cleaner or Germicidal Washroom Cleaner**
- Glass & Mirror Cleaner**

**Housekeeping & Bar Area**

Product Code	Product Name	Directions	Hazard
E0045	Lemon Floor Gel	Apply to wetting. Dilute 20:1 in warm water. For work & washrooms. Dilute 50:1 in water with a sponge or cloth.	DANGER
E0005	Hardwood Floor Maintainer	Apply Two Thin coats with clean mop or roller. Do not use on waxed or oiled surfaces. Do not use on floors with any wax or oil. Do not use on floors with any wax or oil. Do not use on floors with any wax or oil.	WARNING
E0005	High Traffic Floor Polish	Use undiluted. Pour into a bucket or tray. Place mop or applicator to apply evenly across the surface. Apply to dry, well-taken floor and evenly in WEST to EAST direction. Leave to dry for approximately 30 minutes.	No Significant Hazard
E0005	Floor Foam Restorer	Apply to dry, well-taken floor and evenly in WEST to EAST direction. Leave to dry for approximately 30 minutes. A first coat may be required in heavy traffic areas on old or worn floors.	DANGER
B1255	Glasswash Detergent	Dispense into ultrasonic glass washing machine through an electronic dispenser at a rate of 1.5 litres per litre, depending on cleaning and water hardness, in accordance with the machine manufacturer's instructions.	WARNING
B1515	Stainless Steel Aid	Dispense into ultrasonic glass washing machine through an electronic dispenser at a rate of 1.2ml per litre in accordance with the machine manufacturer's instructions.	No Significant Hazard
BA3075	Glass & Mirror Cleaner (Clear)	Use undiluted. Spray evenly 15-30cm directly onto surface and wipe soon immediately with a clean, dry, lint free cloth. For small areas, spray onto cloth then wipe surface. DO NOT SPRAY NEAR FOOD.	DANGER
BA3075	Glass & Mirror Cleaner (Tint)	Use undiluted. Spray evenly 15-30cm directly onto surface and wipe soon immediately with a clean, dry, lint free cloth. For small areas, spray onto cloth then wipe surface. DO NOT SPRAY NEAR FOOD.	DANGER
BA3075	Multi-Surface Polish	Use undiluted. Spray evenly 15-30cm directly onto surface and wipe soon immediately with a clean, dry, lint free cloth. For small areas, spray onto cloth then wipe surface. DO NOT SPRAY NEAR FOOD.	No Significant Hazard
BA3075	Multi-Surface Cleaner	Use undiluted. Spray evenly 15-30cm directly onto surface and wipe soon immediately with a clean, dry, lint free cloth. For small areas, spray onto cloth then wipe surface. DO NOT SPRAY NEAR FOOD.	No Significant Hazard
BA3075	Hard Surface Cleaner	For general use. Dilute 1:100, spray or wipe over surface. For heavy grease or grime, dilute 1:25.	DANGER
B040	Air Freshener 600ml	Stroke can well. Spray in 2 second bursts.	DANGER

**HEALTH & HYGIENE**

XA152

Never mix cleaning products. Always wear gloves & suitable protective clothing. Before cleaning electrical equipment, switch off of power. Remove or cover electricals before commencing cleaning. Always wash cleaning products off skin immediately.

It is the customer's responsibility to ensure that it reflects the work of its products, your conduct and general good practice.

Floor Care  
XA151 A3

Toilet and Washroom  
XA153 A3

Housekeeping & Bar Area  
XA162 A3

## LMS Training

### Training and information at your fingertips...

Jangro Learning Management Solution (LMS) is a fully interactive suite of e-Learning modules which can be accessed online to ensure all staff are fully trained quickly and efficiently.



www.jangrolms.net

### Courses Available

- Carpet Care
- Colour Coding & Infection Control
- COSHH Awareness
- Floor Care
- Health & Safety
- Housekeeping
- Introduction to Cleaning
- Introduction to Equipment
- Kitchen Hygiene
- Manual Handling
- Sharps Handling
- Stay Safe Online
- Washroom Hygiene



[www.janitorialexpress.co.uk](http://www.janitorialexpress.co.uk)

020 7700 3322

64 Brewery Road, London N7 9NT